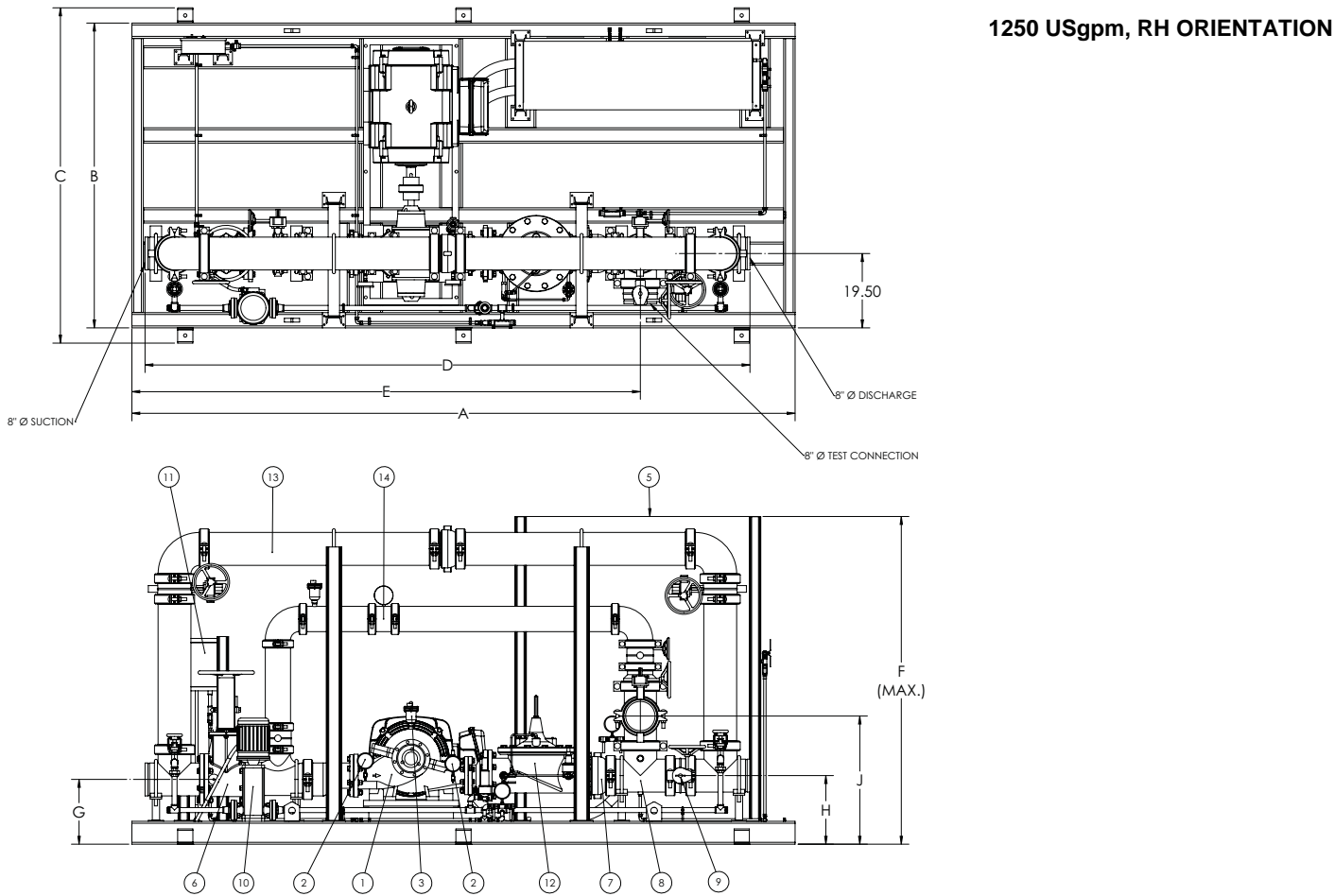


## Series 4600 Horizontal Split Case

## SUBMITTAL

JOB: _____	REPRESENTATIVE: _____
ENGINEER: _____	ORDER NO: _____ DATE: _____
CONTRACTOR: _____	SUBMITTED BY: _____ DATE: _____
	APPROVED BY: _____ DATE: _____

TAG/REF:										
PUMP DATA	FLOW	HEAD	MOTOR DATA	HP	RPM	VOLT	PH	Hz	ENCLOSURE	



PUMP MODEL	HP		MAX. DIMENSIONS Inches (mm)									MAX. WEIGHT
	ODP	TEFC	A	B	C	D	E	F	G	H	J	lbs (kg)
6x5x12MF	150	---	166.00 (4216)	74.00 (1880)	82.00 (2083)	158.73 (4032)	133.41 (3389)	84.00 (2134)	15.50 (394)	16.50 (419)	32.12 (816)	7,900 (3583.4)
6x5x12MF	---	150	166.00 (4216)	80.00 (2032)	88.00 (2235)	158.73 (4032)	133.41 (3389)	84.00 (2134)	17.00 (432)	18.00 (457)	33.62 (854)	8,800 (3991.6)
6x5x12MF	200-250	---	174.00 (4420)	80.00 (2032)	88.00 (2235)	158.73 (4032)	133.41 (3389)	86.00 (2184)	17.00 (432)	18.00 (457)	33.62 (854)	8,900 (4037.0)
6x5x12MF	---	200-250	174.00 (4420)	92.00 (2337)	100.00 (2540)	158.73 (4032)	133.41 (3389)	86.00 (2184)	17.00 (432)	18.00 (457)	33.62 (854)	10,400 (4717.4)
6x5x15F	75-100		166.00 (4216)	74.00 (1880)	82.00 (2083)	158.73 (4032)	133.41 (3389)	84.00 (2134)	17.00 (432)	18.00 (457)	33.62 (854)	8,200 (3719.5)
8x6x10LF	150	---	166.00 (4216)	74.00 (1880)	82.00 (2083)	156.73 (3981)	132.41 (3363)	84.00 (2134)	16.50 (419)	16.50 (419)	32.12 (816)	7,900 (3583.4)
8x6x10LF	---	150	166.00 (4216)	80.00 (2032)	88.00 (2235)	156.73 (3981)	132.41 (3363)	84.00 (2134)	18.00 (457)	18.00 (457)	33.62 (854)	8,900 (4037.0)
8x6x12.5HF	40-60		166.00 (4216)	74.00 (1880)	82.00 (2083)	158.73 (4032)	133.41 (3389)	84.00 (2134)	16.75 (425)	16.75 (425)	32.38 (822)	7,400 (3356.6)
8x6x16F	125	---	166.00 (4216)	74.00 (1880)	82.00 (2083)	160.73 (4083)	134.41 (3414)	84.00 (2134)	16.75 (425)	16.75 (425)	32.38 (822)	8,100 (3674.1)
8x6x16F	---	125	166.00 (4216)	80.00 (2032)	88.00 (2235)	160.73 (4083)	134.41 (3414)	84.00 (2134)	16.75 (425)	16.75 (425)	32.38 (822)	9,000 (4082.3)

ITEM No.	DESCRIPTION	QTY.
1	HSC FIRE PUMP & MOTOR	1
2	PUMP SUCTION / DISCHARGE GAUGE	2
3	PUMP CASING AIR RELEASE VALVE	1
4	PUMP CASING RELIEF VALVE	1
5	FIRE PUMP CONTROLLER	1
6	SUCTION OS&Y GATE VALVE, 8" FLANGED	1
7	CHECK VALVE, 8" GROOVED	1
8	TEST TEE, 8" GROOVED	1
9	DISCHARGE BUTTERFLY VALVE, 8" GROOVED	1
10	VMS JOCKEY PUMP & MOTOR	1 (OPT)
11	JOCKEY PUMP CONTROLLER	1 (OPT)
12	SUCTION CONTROL VALVE, 8" FLANGED (OPTIONAL)	1 (OPT)
13	CITY BYPASS LOOP, c/w 8" CHECK VALVE & 8" ISOLATION BUTTERFLY VALVES	1 (OPT)
14	FLOW METER LOOP c/w 6" VENTURI METER, AIR RELEASE & 6" ISOLATION BUTTERFLY VALVES	1 (OPT)

**S. A. Armstrong Limited**  
 23 Bertrand Avenue  
 Toronto, Ontario  
 Canada, M1L 2P3  
 T: 416-755-2291  
 F: 416-759-9101

**Armstrong Pumps Inc.**  
 93 East Avenue  
 North Tonawanda, New York  
 U.S.A. 14120-6594  
 T: 716-693-8813  
 F: 716-693-8970

**Armstrong Integrated Limited**  
 Wenlock Way  
 Manchester  
 United Kingdom, M12 5JL  
 T: +44 (0) 8444 145 145  
 F: +44 (0) 8444 145 146

